

Florence Road Wimbledon, SW19 8TH

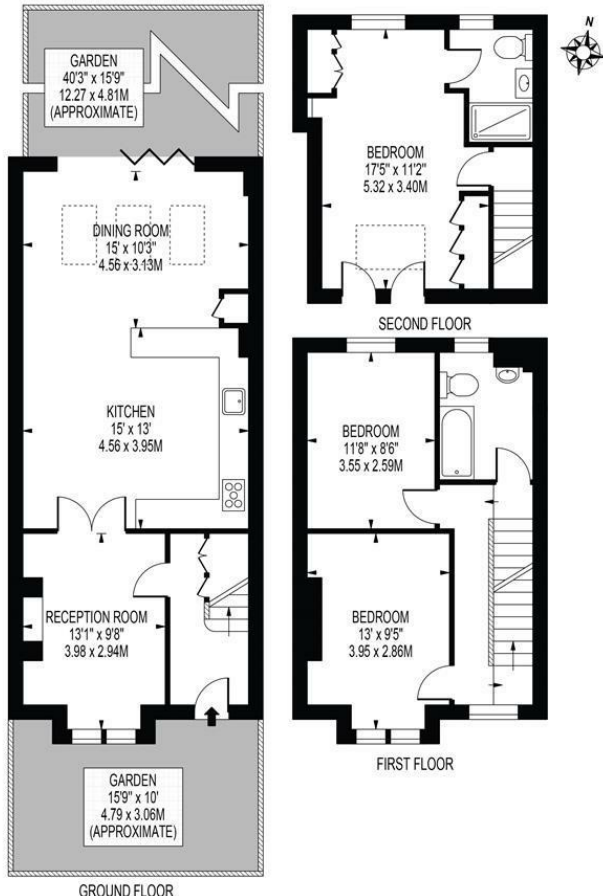
£1,125,000 Freehold



Sold with no onward chain this well presented and fully extended three double bedroom Victorian terraced house occupies a fantastic position within the sought after South Park Gardens area of Wimbledon. With a bright and spacious open plan layout to the ground floor the dining room boasts bi-fold doors leading to a recently redeveloped, low-maintenance garden. Upstairs there are two double bedrooms and family bathroom with the principal bedroom and en suite shower room located in the converted loft. Early viewings are highly recommended.

FLORENCE ROAD

APPROXIMATE GROSS INTERNAL FLOOR AREA: 1160 SQ FT - 107.78 SQ M



- Victorian Terraced House
- South Park Gardens Location
- Three Double Bedrooms
- Two Bathrooms
- Ofsted "Outstanding" Local Schools
- Excellent Transport Links
- No Onward Chain
- Freehold
- EPC Rating TBC
- Council Tax Band F

Energy Efficiency Rating		Current	Potential
Very energy efficient - lower running costs			
(92 plus) A			
(81-91) B			
(69-80) C		72	83
(55-68) D			
(39-54) E			
(21-38) F			
(1-20) G			
Not energy efficient - higher running costs			
England & Wales		EU Directive 2002/91/EC	

For Free Mortgage Quote and Best Mortgage Rates, call an Ellisons Mortgage Advisor on 020 8944 9494



Although these particulars are believed to be correct, their accuracy is not guaranteed and they do not form part of any contract.

Celebrating 30 years of successful Sales and Lettings in Merton

